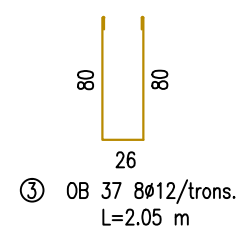
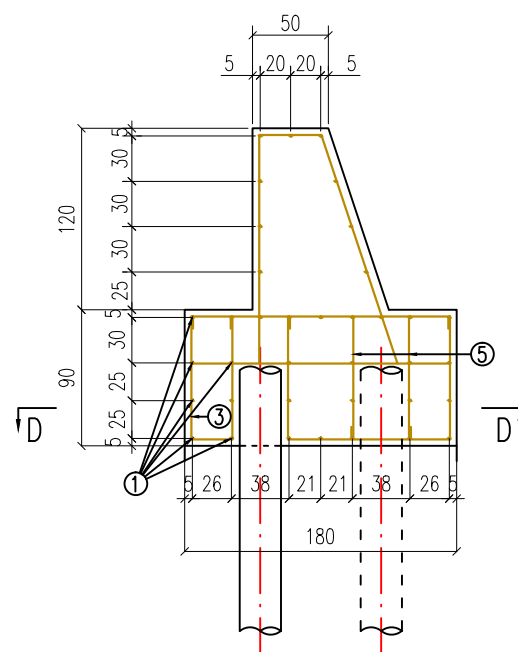
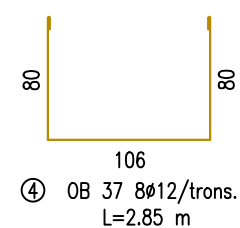
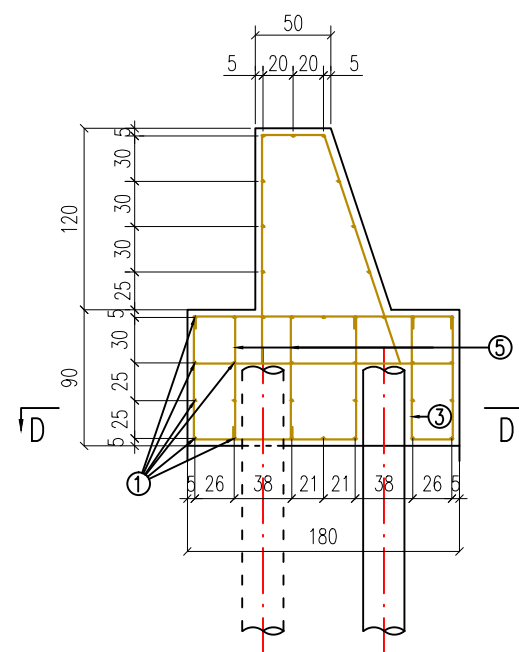


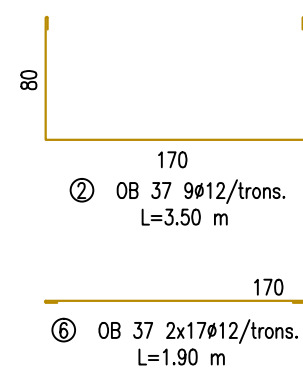
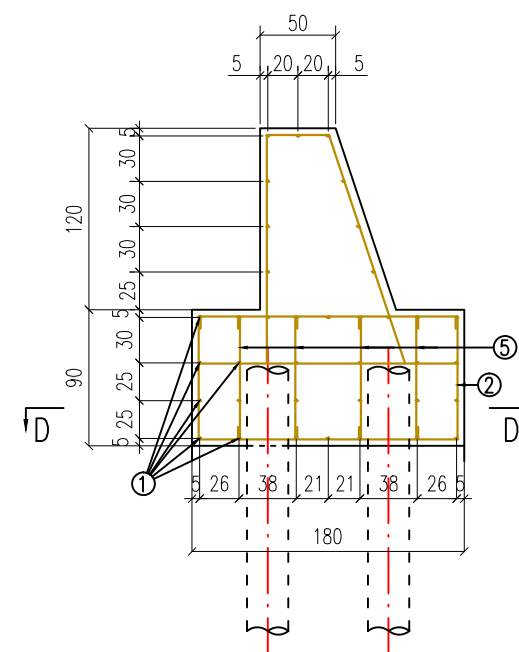
SECTIUNE A-A



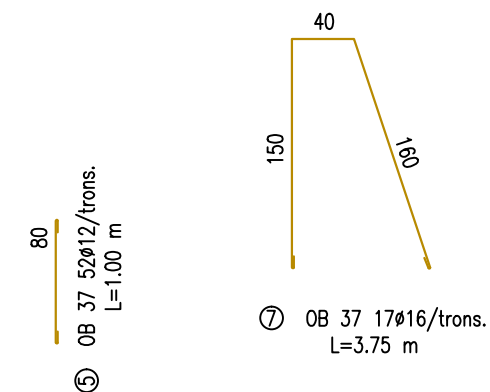
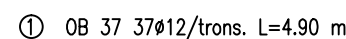
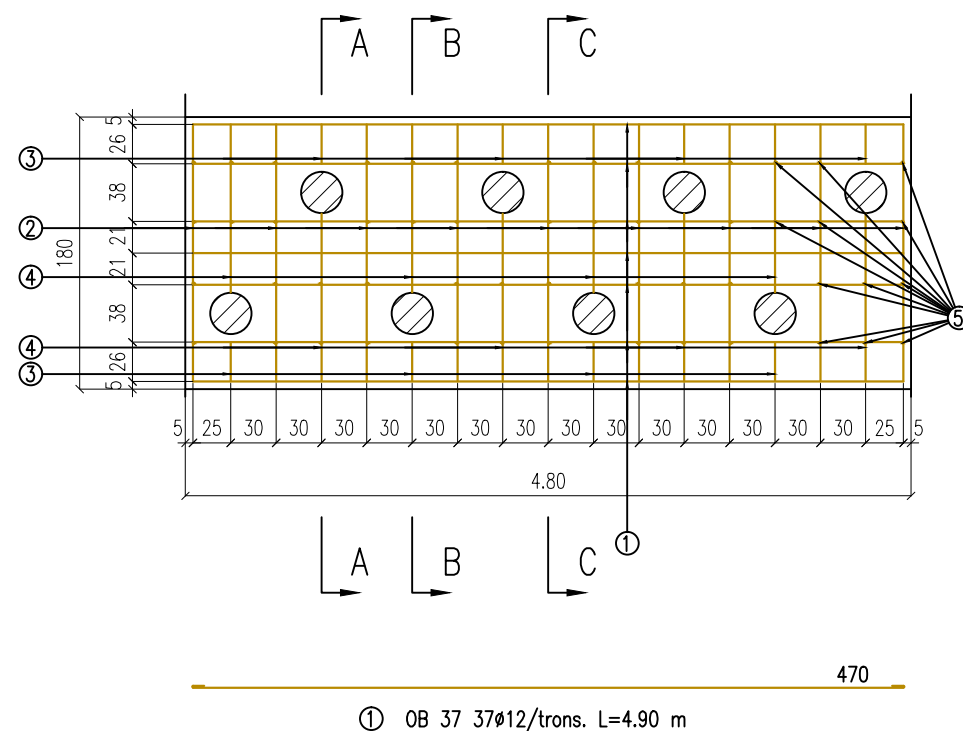
SECTIUNE B-B



SECTIUNE C-C



SECTIUNE D-D



TABEL EXTRAS ARMATURA

Marca	Ø	n	l	n x l	OB 37	
					Ø 12	Ø 16
1	12	37	4.90	181.30	181.30	—
2	12	9	3.50	31.50	31.50	—
3	12	8	2.05	16.40	16.40	—
4	12	8	2.85	22.80	22.80	—
5	12	52	1.00	52.00	52.00	—
6	12	34	1.90	64.60	64.60	—
7	16	17	3.75	63.75	—	63.75
Total lungimi pe diametre (m)					368.60	63.75
Masa pe metru (kg/m)					0.888	1.580
Masa pe diametru (kg)					327.32	100.73
Masa totala un tronson (kg)					428.05	
Total L / Ø - 5 trons. (m)					1843.00	318.75
Masa pe metru (kg/m)					0.888	1.580
Masa pe diametru (kg)					1636.58	503.63
Masa totala 5 tronsoane (kg)					2140.21	

Proiectant specialitate S.C. RUTCONSULT S.R.L. PLOIESTI J29/1698/2006			CONSOLIDARE STRADA POMILOR PUNCT STOIAN – ALEEA VALEA REA COMUNA CORNU – JUDETUL PRAHOVA Beneficiar: Comuna Cornu		PR. NR. 102/2015 FAZA: PT+DE+CS
SPECIFICATIE	NUME	SEMNATURA	SCARA:	PLAN ARMARE RADIER	PLANSĂ 9
SEF PROIECT	IONITA MARIA		1:50		
PROIECTAT	IONITA MARIA				
DESENAT	IONITA MARIA				